

## PROGRAM OF STUDY

### ATEX (Applied Technology Exploration—Grades 9 & 1

ATEX is recommended for students who are interested in enrolling in a career and technology program at Parkside High School. This course is scheduled in conjunction with Level I CTE courses and gives students an opportunity to explore four career areas.

### Principles and Practice of Cosmetology—Grade 10

This course provides an introduction to the field of cosmetology. Students develop and practice basic skills in cosmetology, develop a broad understanding of the variety of career options available to a licensed cosmetologist and learn how science and math is a fundamental aspect of the practice of cosmetology. This course provides 390 of the 1500 hours required to take the Maryland State Cosmetology Examination. Uniforms, clinical shoes and a cosmetology kit deposit is required.

### Advanced Cosmetology: Theory & Application—Grade 11

This course allows students to develop and practice more advanced techniques in the field of cosmetology. Techniques and knowledge learned will include: facials, massage, make-up application, hair coloring, hair removal, artificial nails, and application of the foundation knowledge of anatomy, physiology, and chemistry. This course provides 590 of the 1500 hours required to take the Maryland State Cosmetology Examination.

### Honors Mastery of Cosmetology—Grade 12

This course provides students the opportunity to further refine and apply skills that support all aspects of the cosmetology industry. It will assist in preparing students to obtain employment and advancement in the field of cosmetology upon passing the State Board of Cosmetologists' licensing examination. This course provides 590 of the 1500 hours required to take the Maryland State Cosmetology Examination.



## Career and Technology Education

Parkside High School  
1015 Beaglin Park Drive  
Salisbury, MD 21804

Phone 410.677.5144 Fax 410.677.5105  
[www.wcboe.org](http://www.wcboe.org)

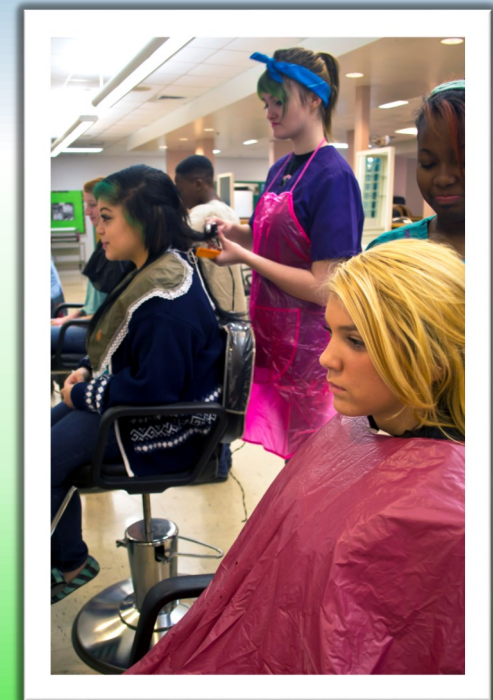


#### Notice of Nondiscrimination

The Wicomico County Board of Education does not discriminate in admissions, access, treatment, or employment in its programs and activities on the basis of race, sex, sexual orientation, marital status, color, gender identity and expression, national origin, creed, religion, age, ancestry, genetic information, or physical or mental disability.



## Cosmetology



[www.wcboe.org](http://www.wcboe.org)

Training Tomorrow's Professionals Today



## *A Career in Cosmetology*

Careers in cosmetology programs prepare individuals to care for and beautify hair, skin, and nails. Students are instructed in the art and science of cosmetology as well as all aspects of the industry. Emphasis is placed on hygiene, safety, and sanitation, as well as State Board of Cosmetologists' rules and regulations. Related areas of instruction include human anatomy and physiology; mathematics and measurement; and chemistry. Salon management is an integral part of the classroom and clinical experience. The 1,500 hour program includes classroom instruction, clinical experience, related mentored work-based learning experience and a senior capstone project. Upon successful completion of the program, the students are required to take the Maryland Board of Cosmetologists' Examination.

## Is Cosmetology For You

- \* Are you creative?
- \* Do you love working with your hands?
- \* Do you interact well with people?

***Apply now—Cosmetology is for You!***



## How do I take CTE?

CTE courses are taught at Parkside High School. Students begin their CTE experience in most programs by enrolling in the ATEX (Applied Technology Exploration) introductory course to find out more about the Maryland CTE State Approved Programs of Study that are offered. Students in grades 9 or 10 may enroll in an ATEX course to find out more about the opportunities that CTE courses may offer. If you need additional information, please call the Parkside CTE office at 410.677.5144.

[www.wcboe.org](http://www.wcboe.org)

**Training Tomorrow's Professionals Today**